



BLUEWAY

EVI AIR TO WATER

HEAT PUMP





BLUEWAY EVI Air to Water Heat Pump is especially designed for extremely cold climate. With its innovative technology, the system is able to retrieve heat from the air down to -25°C outdoor temperature. Its core philosophy is to solve user's home heating during winter and cooling during summer, as well as domestic hot water. It utilizes EVI Scroll compressors which are equipped with a vapour injection connection for Economizer Operation. Effectiveness enhancement is accomplished by utilizing a sub-cooling circuit, it also increases heating capacity.

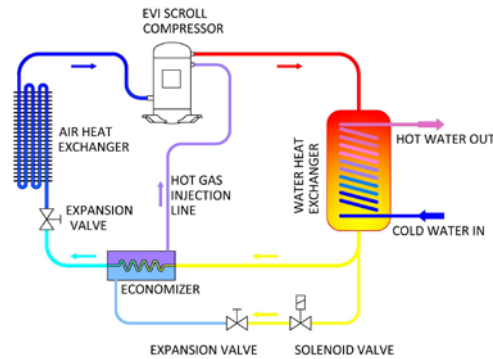
Features



- ◆ Extended working range down to -25°C ambient
- ◆ High COP at low ambient temperature (up to 2.5 even at -15°C ambient)
- ◆ EVI scroll compressor
- ◆ Using electronic expansion valve, achieving accurate, stable and high efficiency throttling
- ◆ Stainless steel plate heat exchanger as condenser
- ◆ Built-in WILLO circulation pump and water flow switch
- ◆ Intelligent LCD touch key wire controller
- ◆ Four-way valve for automatic defrosting (cooling function optional)
- ◆ Built in water pump
- ◆ Bottom heater included
- ◆ Built in electric heating element

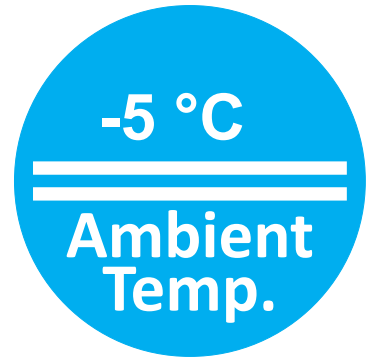
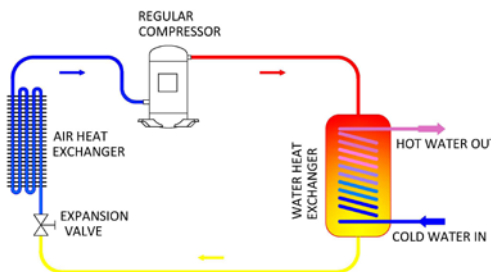
Comparison Between EVI system and conventional system

EVI HEAT PUMP SYSTEM



The maximum output water temperature for EVI heat pump system is up to 65 °C and it can work safely at ambient temperature down to -25 °C

REGULAR HEAT PUMP SYSTEM



The maximum output water temperature for regular heat pump system is only 55 °C, and its heating capacity decrease substantially under -5 °C, it can not work safely at -25 °C



Blueway EVI heat pump system can work securely and stably at extremely cold climate and normally produce hot water

SPLIT TYPE

BLUEWAY Split Type EVI Air to Water Heat Pump has an outdoor unit and an indoor unit. The compressor is located in the outdoor unit and the hydronic components are located in the indoor unit. It supply heating, cooling and domestic hot water.



Free Standing
Indoor Unit



Wall Mounted
Indoor Unit

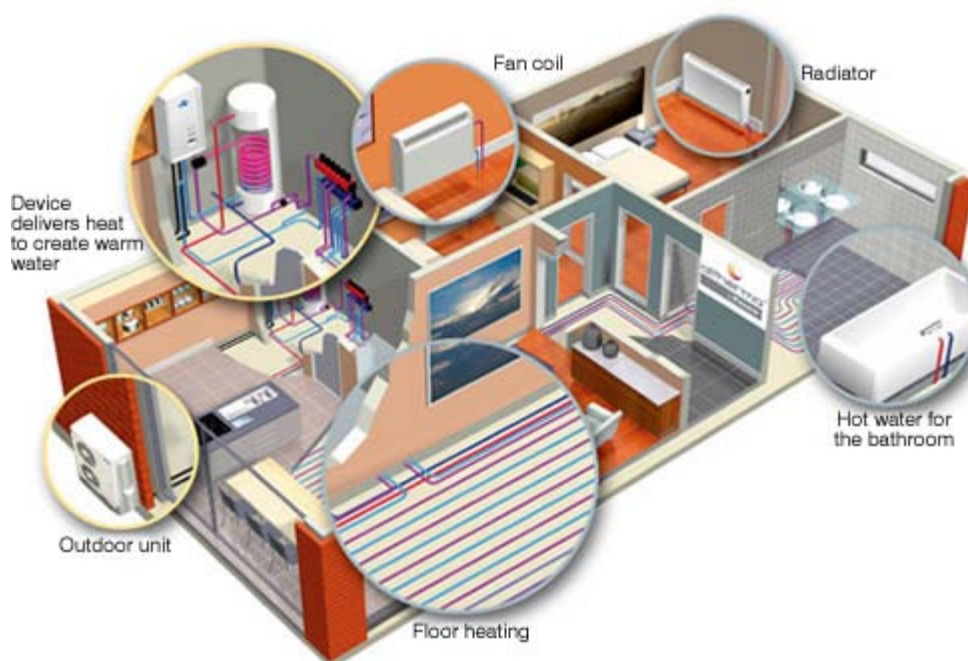


Outdoor Unit

FEATURES

- ◆ No water freezing problem with split design (water system inside the house)
- ◆ The outdoor unit is designed for anti-snow
- ◆ The indoor unit is designed for substituting traditional boilers easily, with luxurious façade

APPLICATION



SPECIFICATION DATAS

Split EVI Low Ambient Heat Pump

Model			EHP-10ST	EHP-13ST	EHP-16ST	EHP-22ST	EHP-30ST
HP			4	5	6	8	10
Power supply		V/Ph/Hz	380-415V/3Ph/50Hz				
A7 / W35°C	Heating capacity	kW	10.3	13.2	16.5	22.3	30.5
	Power input	kW	2.58	3.38	4.23	5.87	7.44
	Running current	A	4.6	6.1	7.6	10.5	13.3
	COP	-	4.0	3.9	3.9	3.8	4.1
A7 / W45°C	Heating capacity	kW	10.1	12.9	16.2	21.9	29.3
	Power input	kW	3.06	4.03	5.10	6.94	8.88
	Running current	A	5.5	7.2	9.1	12.4	15.9
	COP	-	3.30	3.21	3.17	3.15	3.30
A35 / W7°C	Cooling capacity	kW	7.9	10.0	12.5	16.4	21.5
	Power input	kW	2.81	3.56	4.53	5.96	7.68
	Running current	A	5.0	6.4	8.1	10.7	13.7
	EER	-	2.80	2.80	2.75	2.75	2.80
Noise level		DB(A)	60	64	65	65	65
Rated outlet water temp.		°C	55				
Max outlet water temp.		°C	60				
Ambient temperature range		°C	-20~43				
Rated water flow rate		L/S	0.49	0.63	0.79	1.07	1.46
Rated pressure drop		kPa	50	50	50	50	50
Max. Working Pressure	Refrigerant	Bar	44	44	44	44	44
	Water	Bar	7	7	7	7	7
Water connection Ø		mm	28	28	28	28	32
Controller		-	Micro processor based digital wire controller with LCD display				
External cabinet		-	Galvanized steel with powder coating				
Compressor	Make	-	Hitachi				Danfoss
	Type	-	EVI Scroll				
	Nos.	-	1	1	1	1	1
	Refrigerant	-	R410A				
Water heat exchanger	Type	-	Brazen plate heat exchanger				
	Materials	-	SUS 316				
Built in electric heater		KW	optional	optional	optional	optional	optional
Built in 3-way valve		-	yes	yes	yes	yes	yes
Built in pump		-	Wilo/Xinhu	Wilo/Xinhu	Wilo/Xinhu	Wilo/Xinhu	Wilo/Xinhu
Dimension (W*D*H)	Indoor Unit (Free Standing Type)	mm	660*650*1150	660*650*1150	660*650*1150	1200x650x1150	1200x650x1150
	Indoor Unit (Wall Mounted Type)	mm	508*406*947	508*406*947	508*406*947	508*406*1000	508*406*1000
	Outdoor Unit	mm	830*310*1260	830*310*1260	930*930*1270	1105x515x1500	1105x515x1500

Note:

For Free standing type, the compressor is located in the indoor unit; While for Wall Mounted Type, the compressor is located in the outdoor unit.



Monobloc TYPE

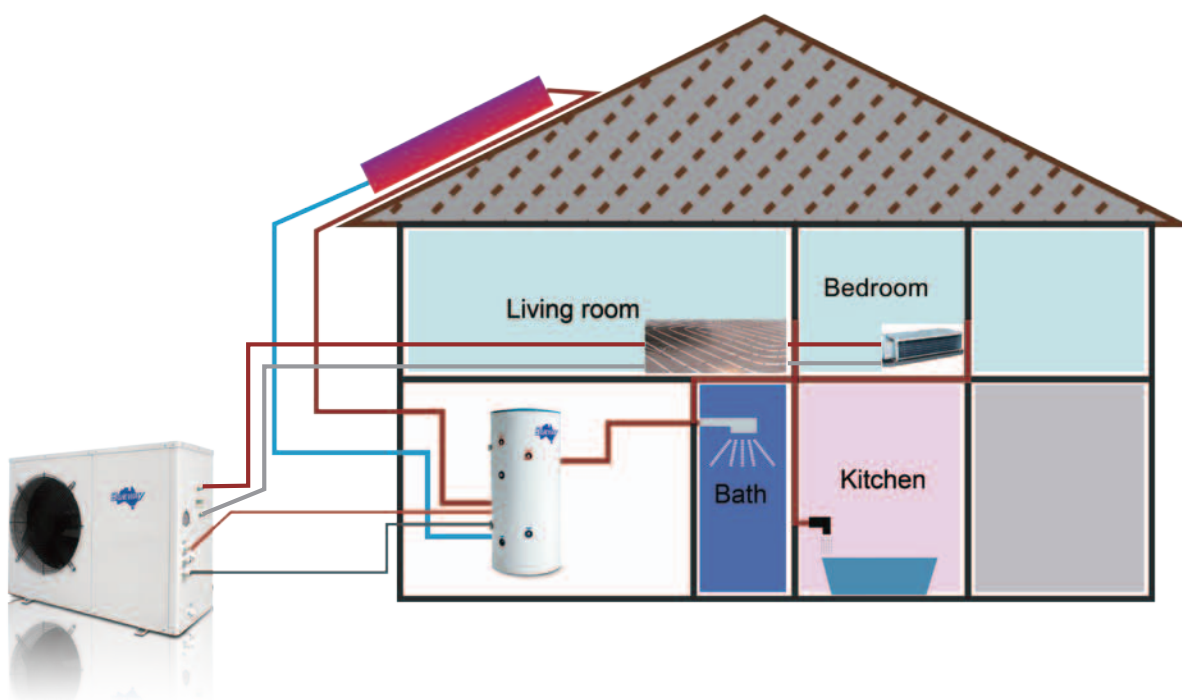


BLUEWAY Monobloc Type EVI Air to Water Heat Pump adopts advanced EVI technology, supplying heating, cooling and hot water.

FEATURES

- ◆ Compact, weather-resistant and easy to install
- ◆ The outdoor unit is designed for anti-snow
- ◆ The indoor unit is designed for substituting traditional boilers easily, with luxurious façade
- ◆ Built in electric heating element

APPLICATION

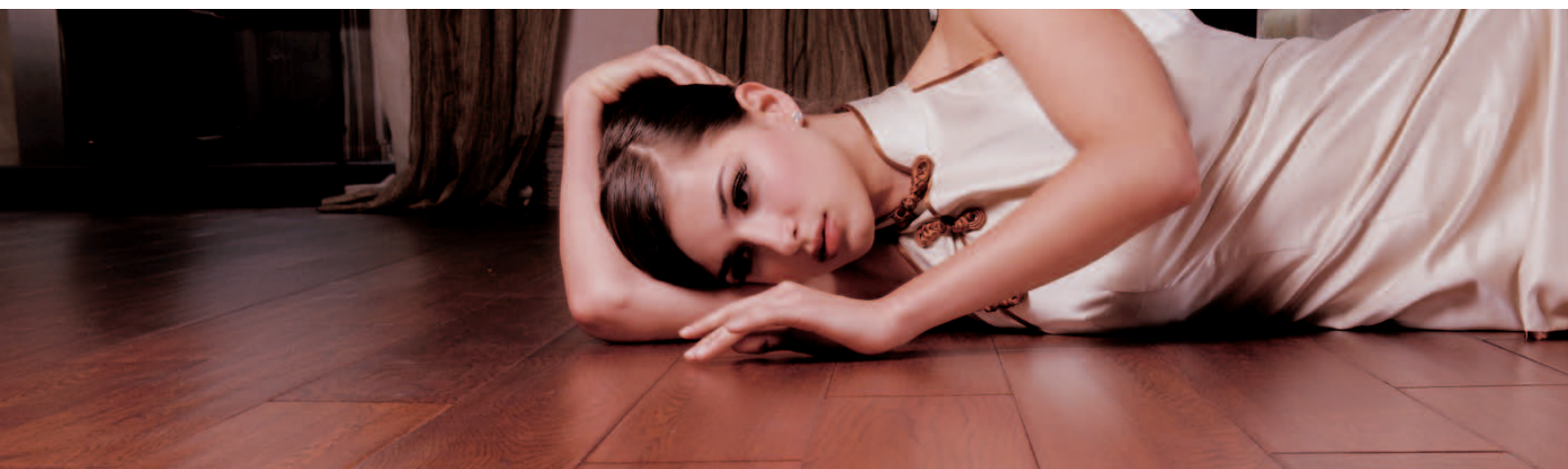


SPECIFICATION DATAS

EVI Low Ambient Heat Pump - Monoblock

Model			EHP-10M	EHP-13M	EHP-16M	EHP-22M
HP			4	5	6	8
Power supply		V/Ph/Hz	380-415V/3Ph/50Hz			
A7 / W35°C	Heating capacity	kW	10.3	13.2	16.5	22.3
	Power input	kW	2.58	3.38	4.23	5.87
	Running current	A	4.6	6.1	7.6	10.5
	COP	-	4.0	3.9	3.9	3.8
A7 / W45°C	Heating capacity	kW	10.1	12.9	16.2	21.9
	Power input	kW	3.06	4.03	5.10	6.94
	Running current	A	5.5	7.2	9.1	12.4
	COP	-	3.30	3.21	3.17	3.15
A-15 / W45 °C	Heating capacity	kW	5.0	6.5	8.1	10.9
	Power input	kW	2.80	3.68	4.62	6.35
	Running current	A	5.0	6.6	8.3	11.4
	COP	-	1.80	1.76	1.75	1.72
Noise level		DB(A)	60	64	65	65
Rated outlet water temp.		°C	55			
Ambient temperature range		°C	-20~43			
Rated water flow rate		L/S	0.49	0.63	0.79	1.07
Rated pressure drop		kPa	50	50	50	50
Max. Working Pressure	Refrigerant	Bar	44	44	44	44
	Water	Bar	7	7	7	7
Water connection Ø		mm	28	28	28	28
Controller		-	Micro processor based digital wire controller with LCD display			
External cabinet		-	Galvanized steel with powder coating			
Compressor	Make	-	Hitachi			
	Type	-	EVI Scroll			
	Nos.	-	1	1	1	1
	Refrigerant	-	R410A			
Water heat exchanger	Type	-	Braze plate heat exchanger			
	Materials	-	SUS 316			
Built in electric heater		-	Optional			
Built in pump		-	Yes			
Bottom plate heater		-	Yes			
Defrost		-	Hot gas + heating element in evaporator coil			
Dimension (W*D*H)	Outdoor Unit	mm	830*310*1260	830*310*1260	930*930*1270	990x440x1600

Test condition: Ambient temp.(DB/WB) = 7°C/6°C, inlet/outlet water temp. = 30°C/35°C





FOSHAN BLUEWAY ELECTRIC APPLIANCES CO.,LTD.

ADD: 2-9# Zhanye Rd,Honggang Industrial Area,Shunde District,Foshan Guangdong

Tel: +86 757 22629989 / 22629286

Fax: +86 757 26154598

Email: ino@heatpumpworld.com

Website: www.blueway.hk

www.heatpumpworld.com